



CAT-01

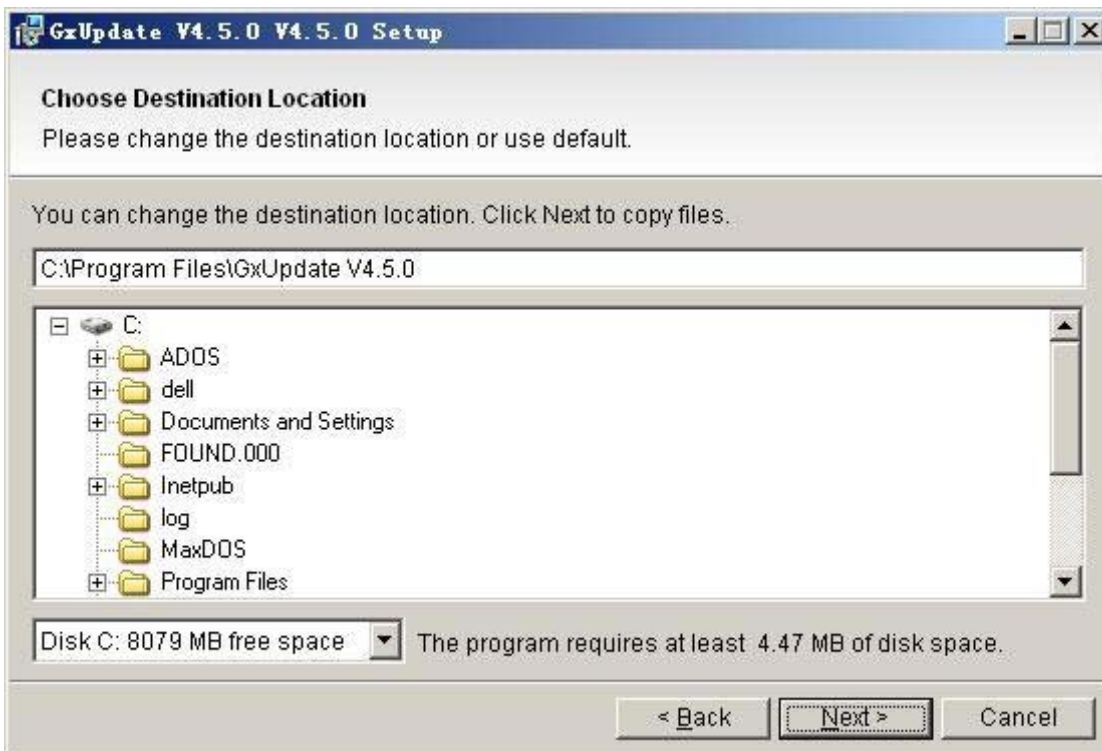
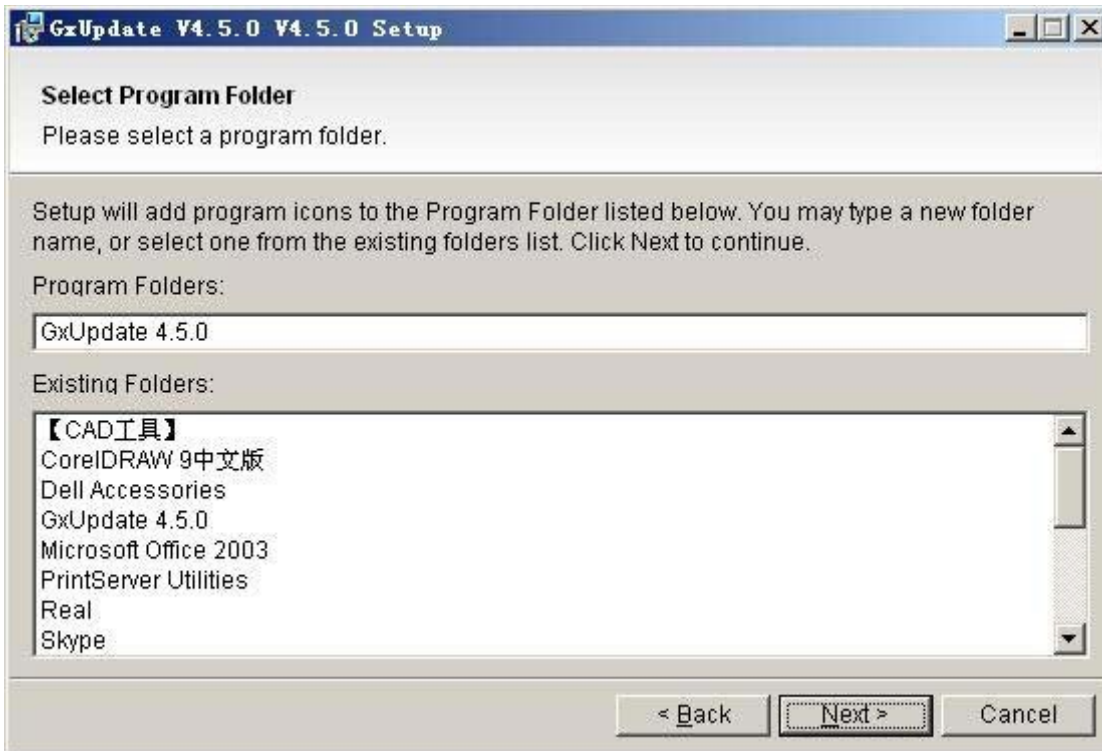
LOADER INSTRUCTIONS

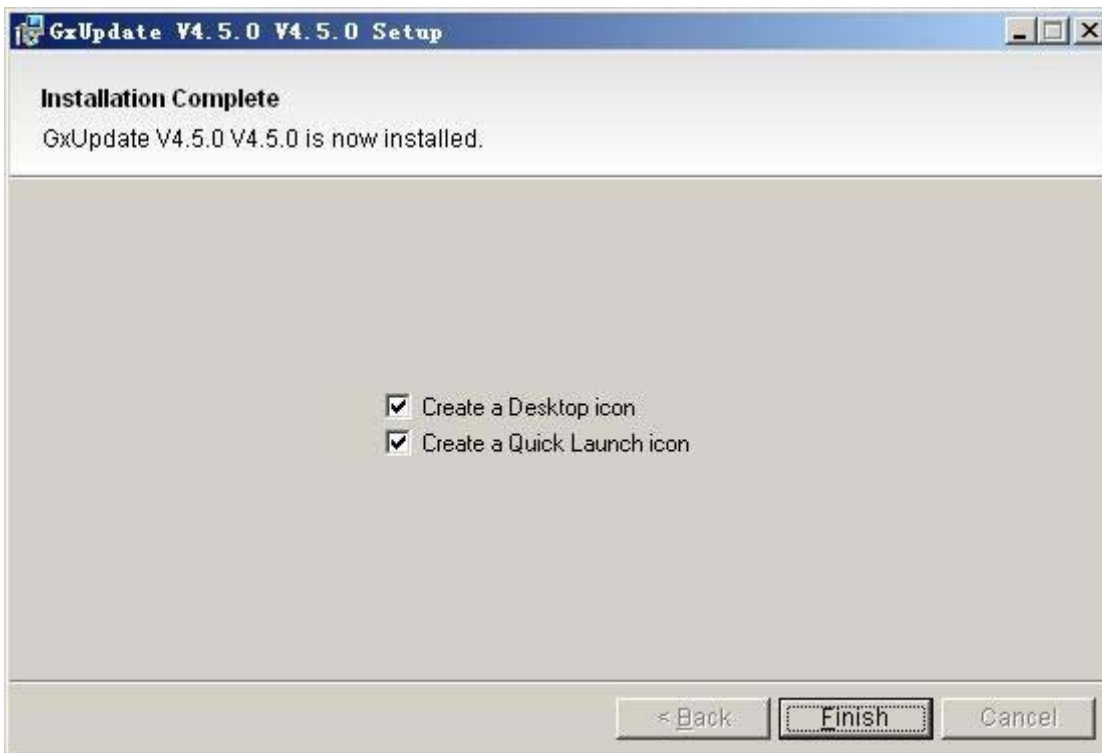
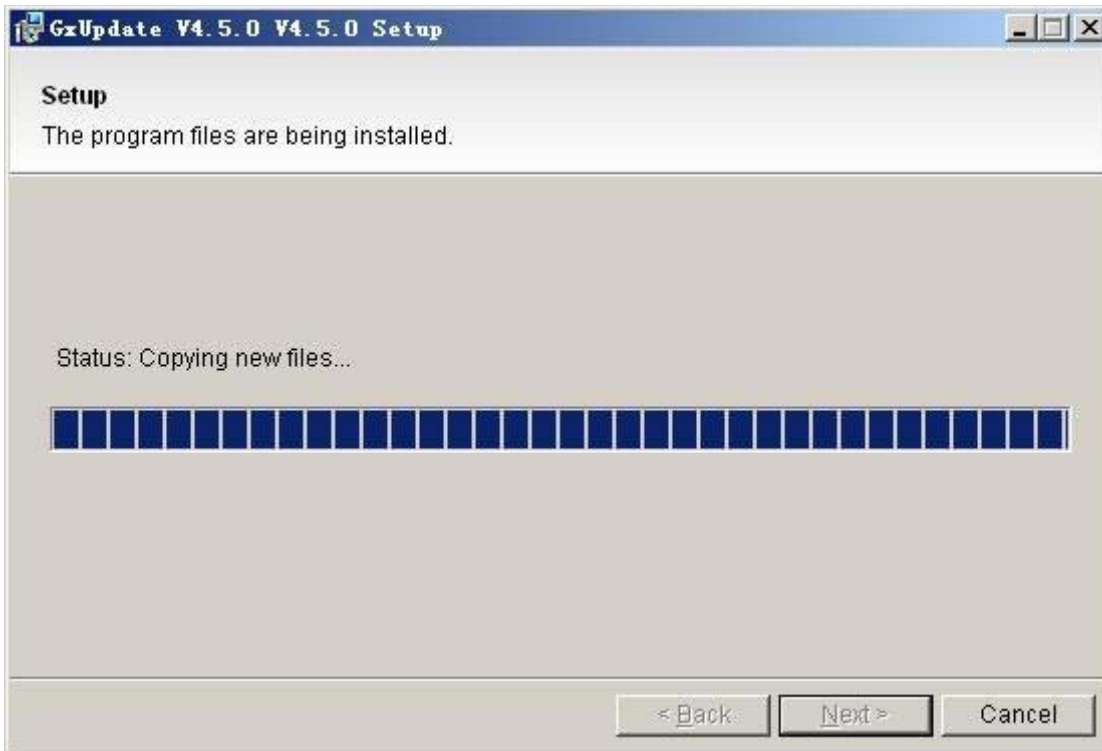
How to install the loader:

1. The current version is GxUpdate 4.5.0 ;

2. After un-zipper the file, click  and begin the installation;

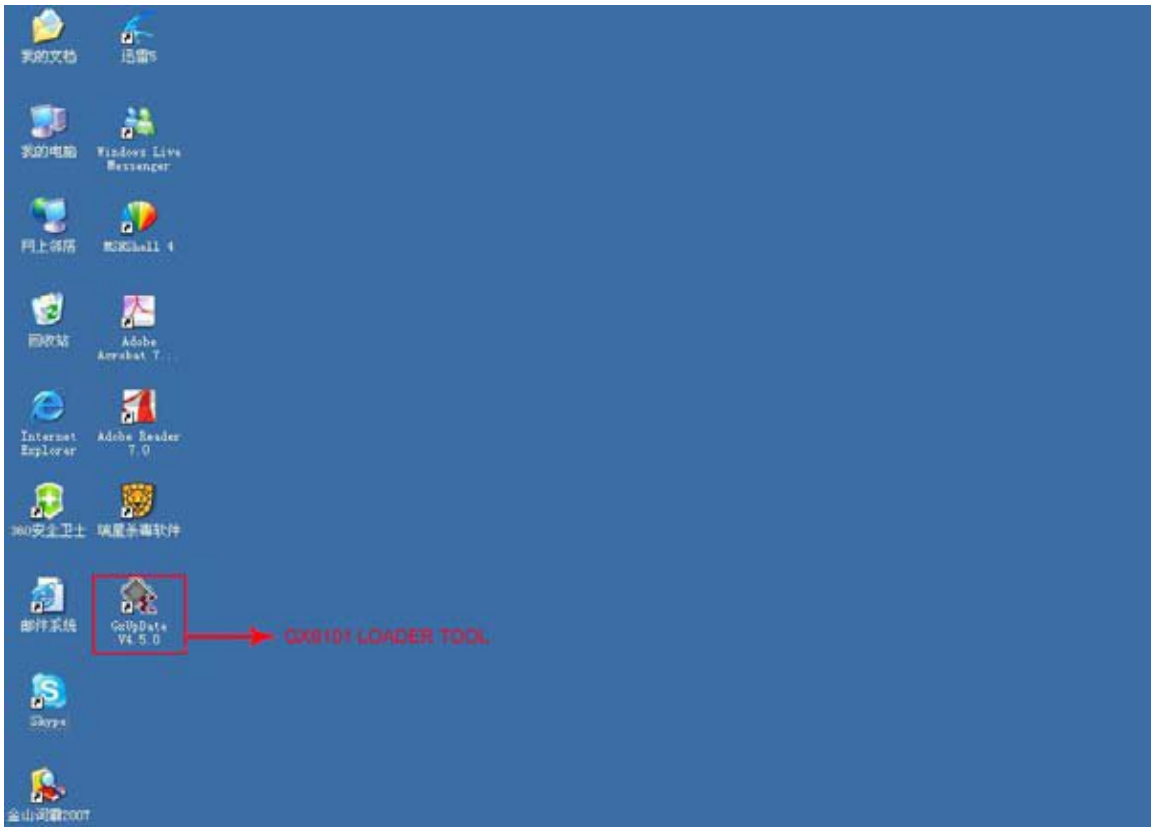




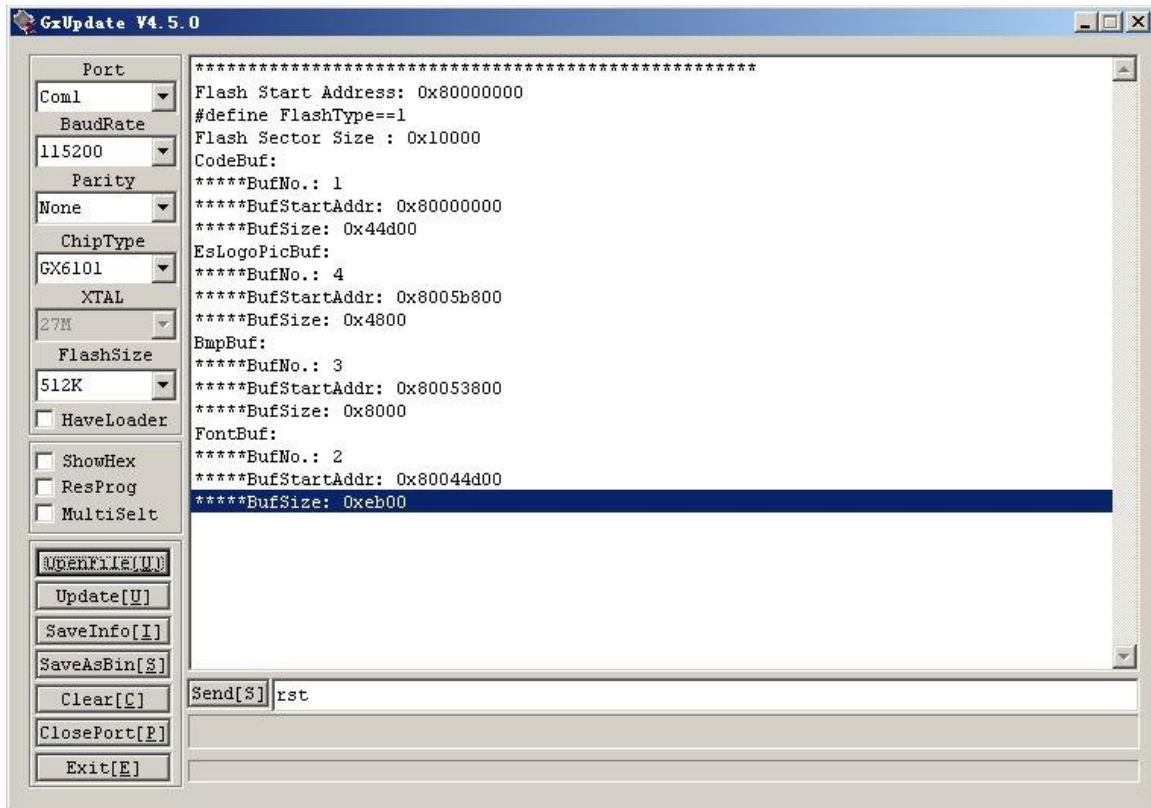


3. Click "Finish" button, the loader was installed successfully; if you select "create a Desktop icon", you can see the loader logo on the

desktop as the below picture shows:



How to upgrade the software:



Note: please use **STRAIGHT CABLE** to connect upgrading board and your PC.

1. Please first keep the receiver **power off**;
2. Once you connect the cable and receiver well, click the loader, and the picture will appear as the above;
3. Select correct COM port according to your conditions; and choose the right chipType ;
4. Click “open file” and select the right software (.bin file);
5. Click “Update”, now it try to transmit information to receiver;
6. **Power** receiver **on** , the process will begin;
7. Till the upgrading process finished and you can see the menu or picture on the TV screen normally, the upgrading process is finished successfully.

OPEN STAR

www.openstarme.com